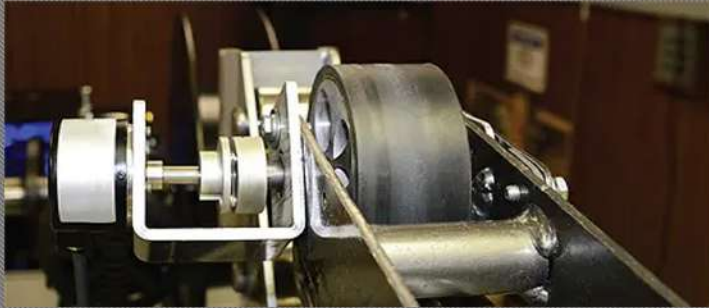


Hoshyar Sanat Spadana

Manufacturer of medical equipment, automation and precision instruments
Member of Isfahan Science and Technology Town(ISTT)
Providing research and development, production and industrial automation services



HOOSHYAR

ROTARY ENCODER



MADE IN IRAN

YARANICS.COM

INCREMENTAL ROTARY ENCODER

series IN50

- incremental encoder
- UP to 300 KHz output
- Operating temperature -10°C +100°C



MECHANICAL SPECIFICATIONS

Dimensions:	see drawing
Shaft:	Ø 6, 8, 10, 12, 15, 20 mm
Shaft loading (axial and radial):	20 N max
Shaft rotational speed:	up to 6000 rpm
Bearings life:	10 ⁹ rev. min.
Weight:	~ 0.2 Kg

ELECTRICAL SPECIFICATIONS

Power supply:	5~24 Vdc
Protection:	against inversion of polarity against short circuit
Output pulse:	A, B, Z (According to coding) A, B, Z, /A, /B, /Z A, B U, V, W
Digital output Resolution:	14 bit (0.08 Deg)
PPR:	25, 50, 100, 200, 256, 300, 400, 500, 512, 1000, 1024
Output frequency:	UP to 300 KHz

MATERIALS

Flange:	Aluminum 7000
Housing:	Metal
Bearings:	608 2RS
Shaft:	stainless steel, non-magnetic

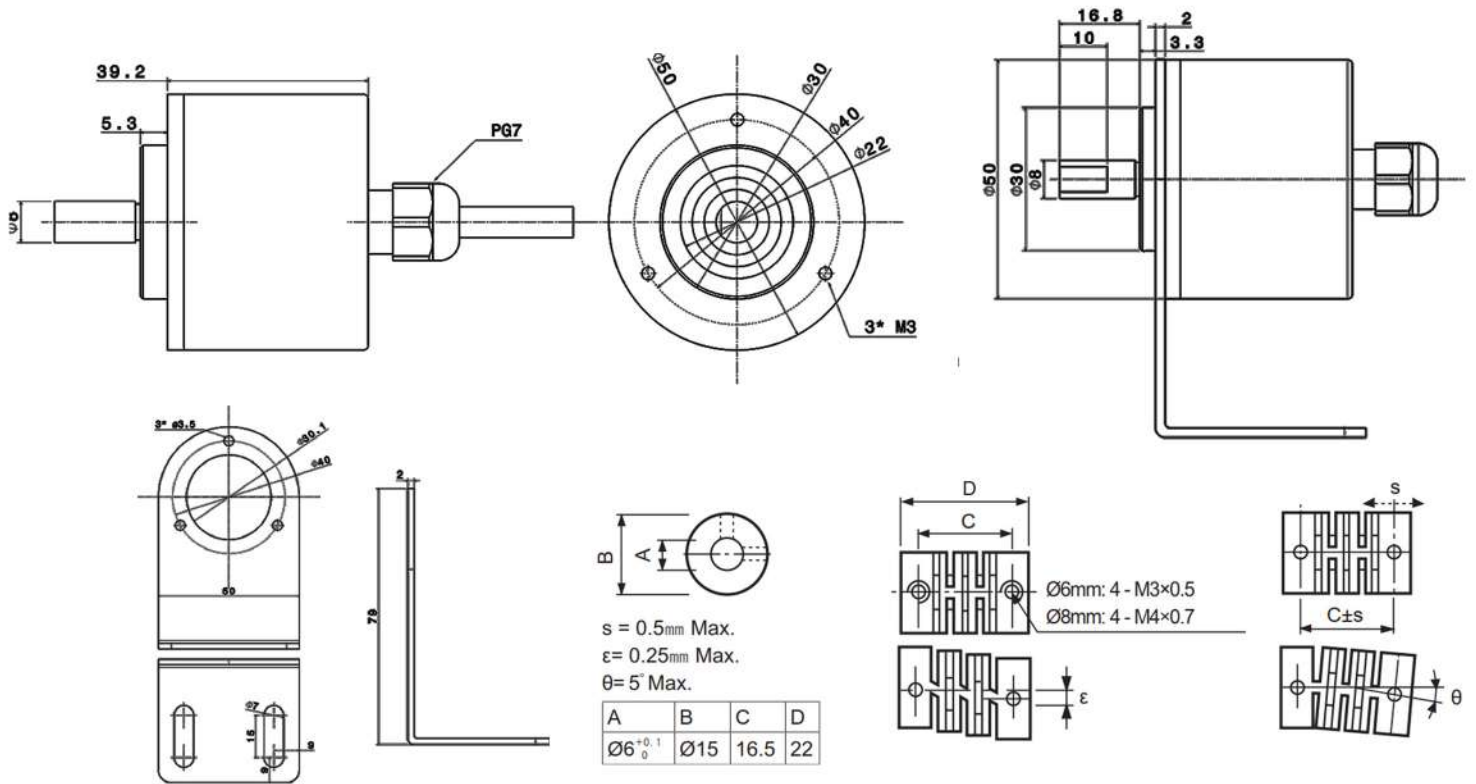


ELECTRICAL CONNECTIONS

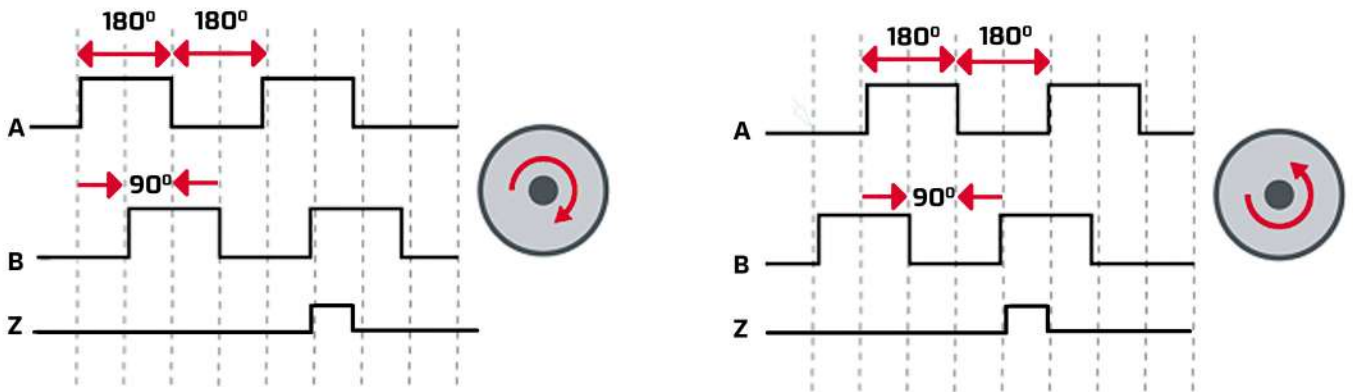
	config1 ▼	config2 ▼
A:	YE	YE
B:	GN	GN
Z:	RD	WH
/A:	GR	-
/B:	OR	-
/Z:	BK	-
0V:	BL	BK
VCC:	BR	RD
SHIELD:	PINK	PINK

INCREMENTAL ROTARY ENCODER

series **IN50**



IN-OUT SIGNAL



ORDER CODE

IN50-BX-RX-TO-24-XXXX-X

Housing Diameter (mm)	Housing Diameter (mm)	Shaft Diameter (mm)	Output type	Supply	Pulse per revolution(PPR)	Connector
B: Blind	S: Socket weld	R: Radial	L: Line drive	5: 5 V _{cc}	5: 5 V _{cc}	L: Cable
S: Socket weld	W: Weld neck	H: Blind hollow	TO: Totem pole	24: 5-24 V _{cc}	24: 5-24 V _{cc}	D: DB Connector
		T: Trough hollow	PN: PNP	36: 5-36 V _{cc}	36: 5-36 V _{cc}	M: MI Connector
			NP: NPN	42: 8-42 V _{cc}	42: 8-42 V _{cc}	T: Terminal



ABSULOTE ROTARY ENCODER

series AS58/AS58H

- Data absolute encoder
- Compatible by wide protocol
- Operating temperature -10°C $+80^{\circ}\text{C}$


MECHANICAL SPECIFICATIONS

Dimensions:	see drawing
Shaft:	Ø 6, 8, 10, 12, 15, 20 mm
Shaft loading (axial and radial):	20 N max
Shaft rotational speed:	1500 rpm max
Bearings life:	10^9 rev. min.
Weight:	~ 0.1 Kg (single turn) ~ 0.2 Kg (multi turn)

ELECTRICAL SPECIFICATIONS

Power supply:	6-24v DC
Protection:	against inversion of polarity against short circuit
Output protocol: (According to coding)	Profibus, Modbus, SSI, Parallel
Digital output Resolution:	14 bit (single turn) 28 bit (multi turn)
Output frequency:	UP to 1Mb/sec

MATERIALS

Flange:	Aluminum 7000
Housing:	Aluminum
Bearings:	608 2RS 
Shaft:	stainless steel, non-magnetic

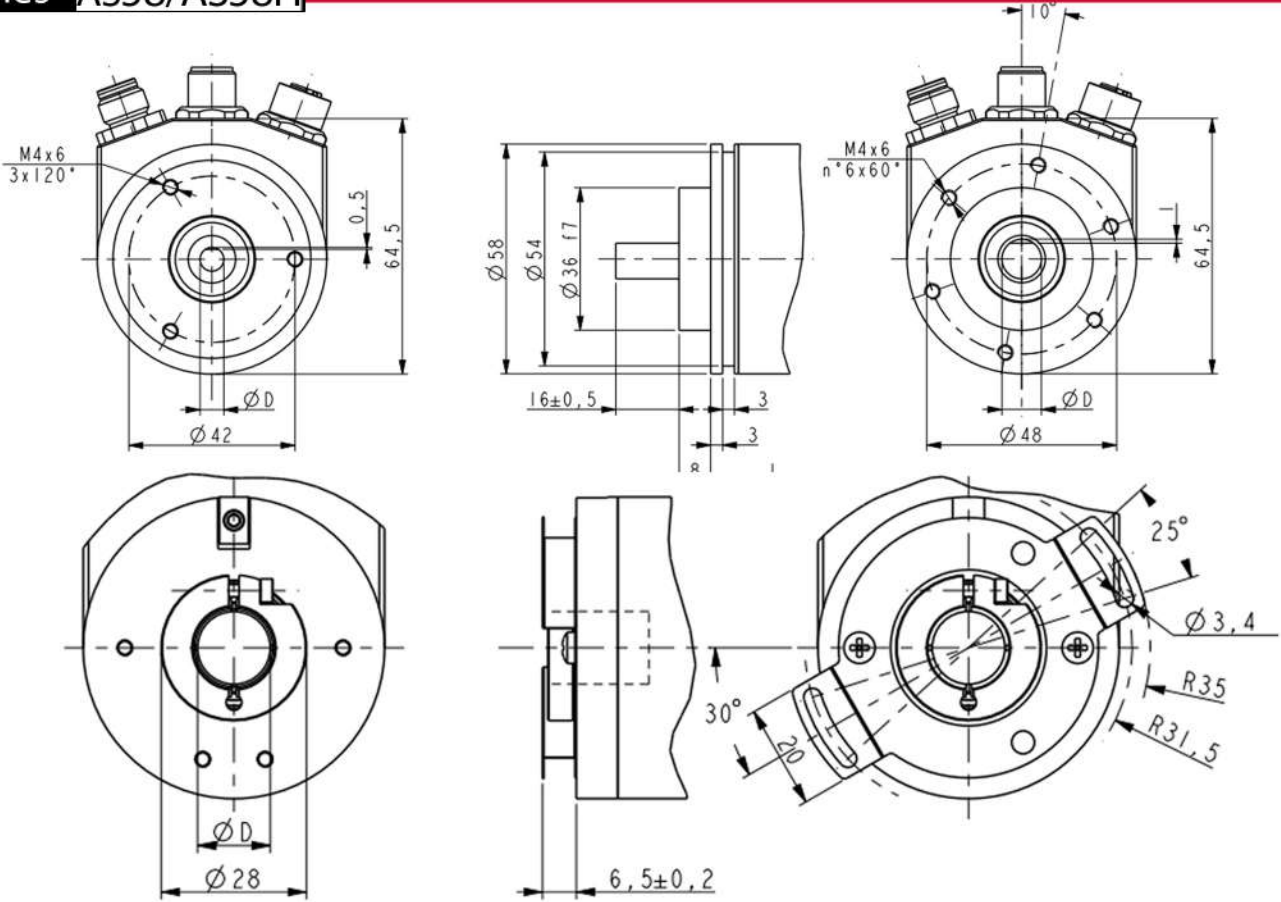


ELECTRICAL CONNECTIONS

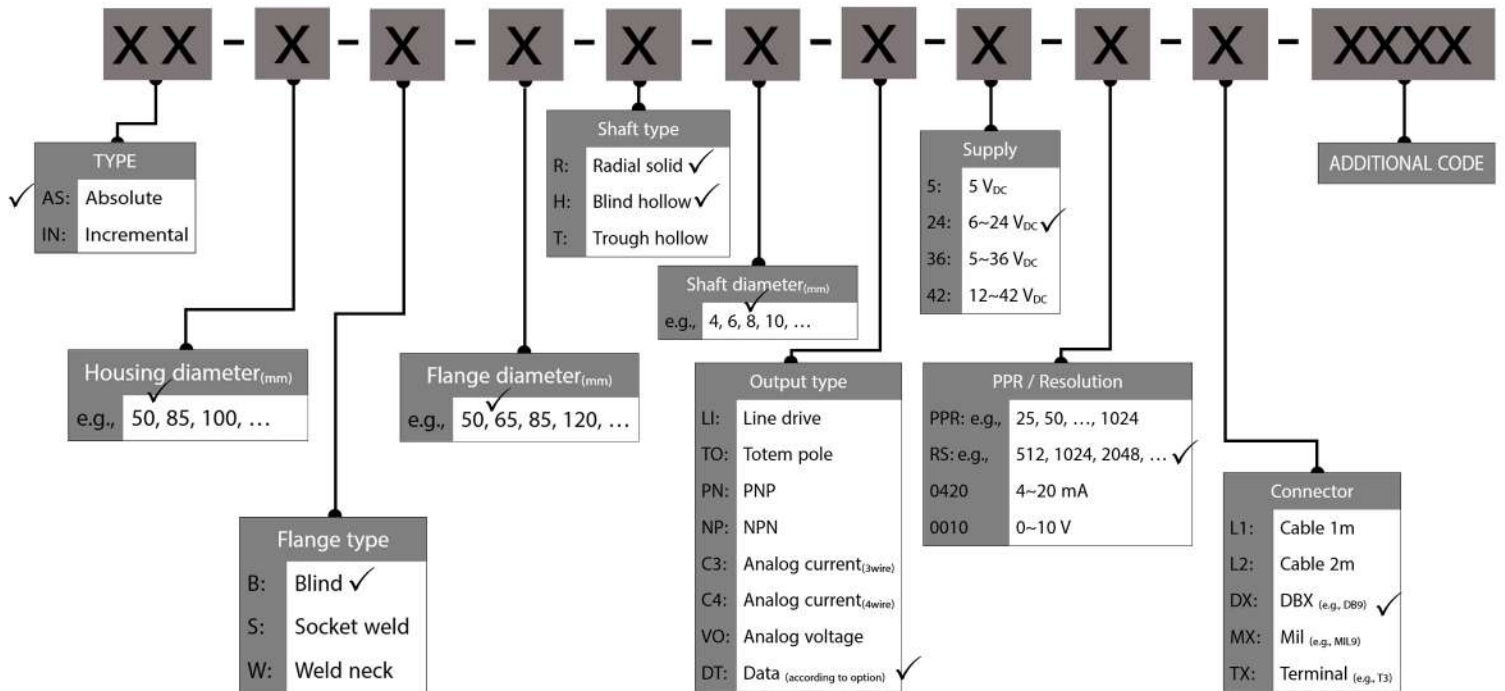
Refer to the user guide

ABSOLUTE ROTARY ENCODER

series AS58/AS58H



ORDER CODE



ABSULOTE ROTARY ENCODER

series AN100

- Heavy duty absolute encoder
- Stable analog output
- Operating temperature -10°C +100°C



MECHANICAL SPECIFICATIONS

Dimensions:	see drawing
Shaft:	Ø 6, 8, 10, 12, 15, 20 mm
Shaft loading (axial and radial):	20 N max
Shaft rotational speed:	1500 rpm max
Bearings life:	10 ⁹ rev. min.
Weight:	~ 1.5 kg

ELECTRICAL SPECIFICATIONS

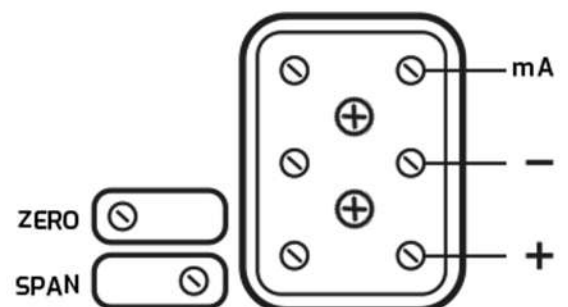
Power supply:	6-35v DC
Protection:	against inversion of polarity
Output:	Analog 4-20/ (0-20) mA
(According to coding)	Analog 0-10 V
Digital output Resolution:	14 bit

MATERIALS

Flange:	Aluminum 7000
Housing:	Metal
Bearings:	6004 2RS
Shaft:	stainless steel, non-magnetic

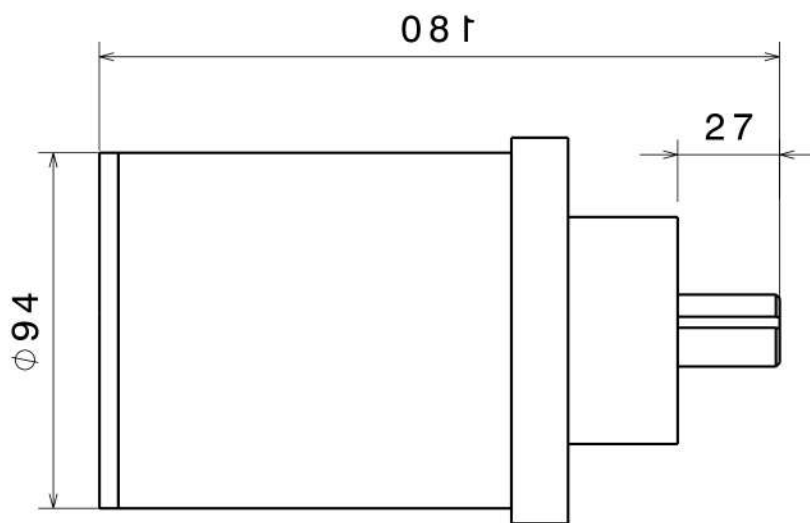
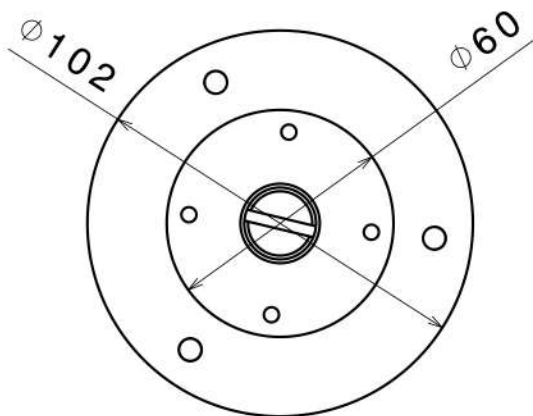


ELECTRICAL CONNECTIONS

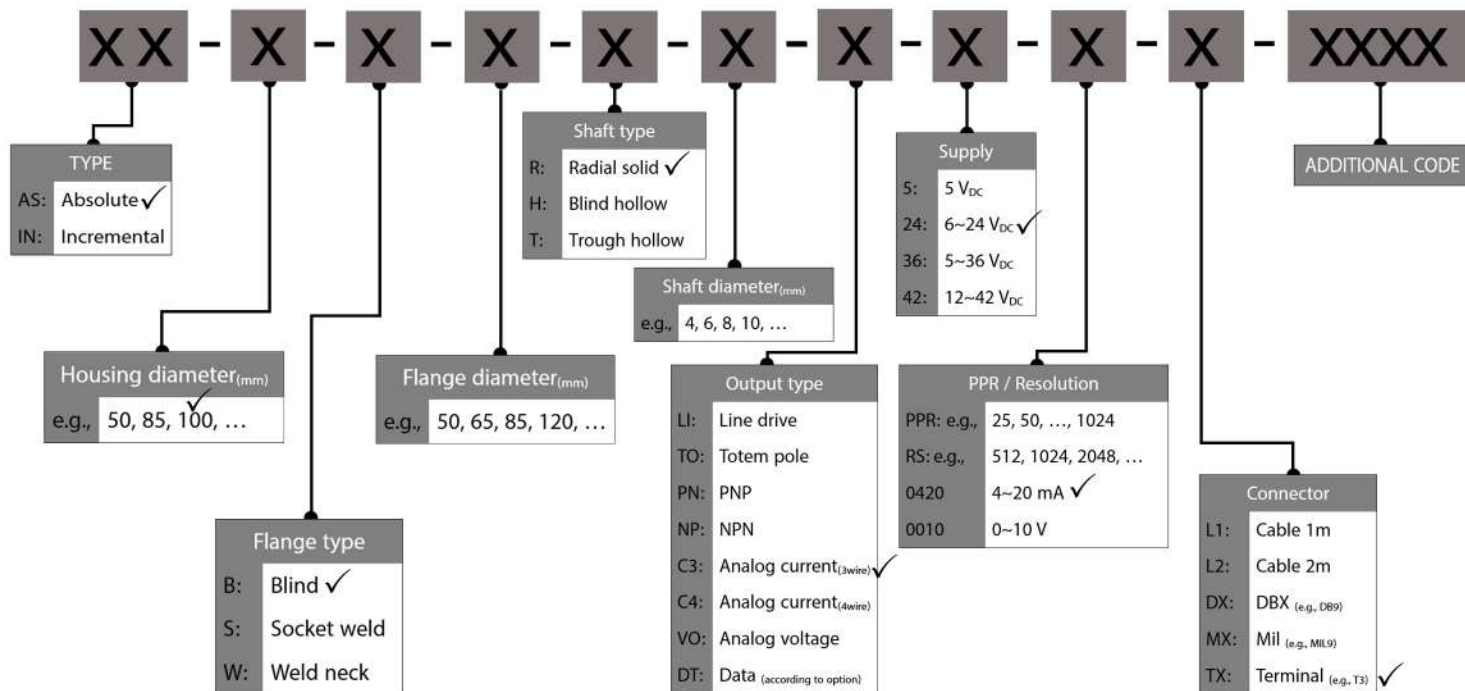


ABSULOTE ROTARY ENCODER

series AN100



ORDER CODE



ABSOLUTE ROTARY ENCODER

series AS50

- Absolute encoder
- UP to 12bit output
- Operating temperature -10°C +100°C



MECHANICAL SPECIFICATIONS

Dimensions:	see drawing
Shaft:	Ø 6, 8, 10, 12, 15, 20 mm
Shaft loading (axial and radial):	20 N max
Shaft rotational speed:	6000 rpm max
Bearings life:	10 ⁹ rev. min.
Weight:	~ 0.2 Kg

ELECTRICAL SPECIFICATIONS

Power supply:	5-24v DC
Protection:	against inversion of polarity

Output pulse:	CSn
<small>(According to coding)</small>	CLK
	DO

Digital output Resolution:	12 bit (~0.08 Deg)
----------------------------	--------------------

Output type	SSI(Binary)/360(Deg)
-------------	----------------------

Max CLK	1MHZ
---------	------

MATERIALS

Flange:	Aluminum 7000
---------	---------------

Housing:	Metal
----------	-------

Bearings:	608 2RS
-----------	---------

Shaft:	stainless steel, non-magnetic
--------	-------------------------------

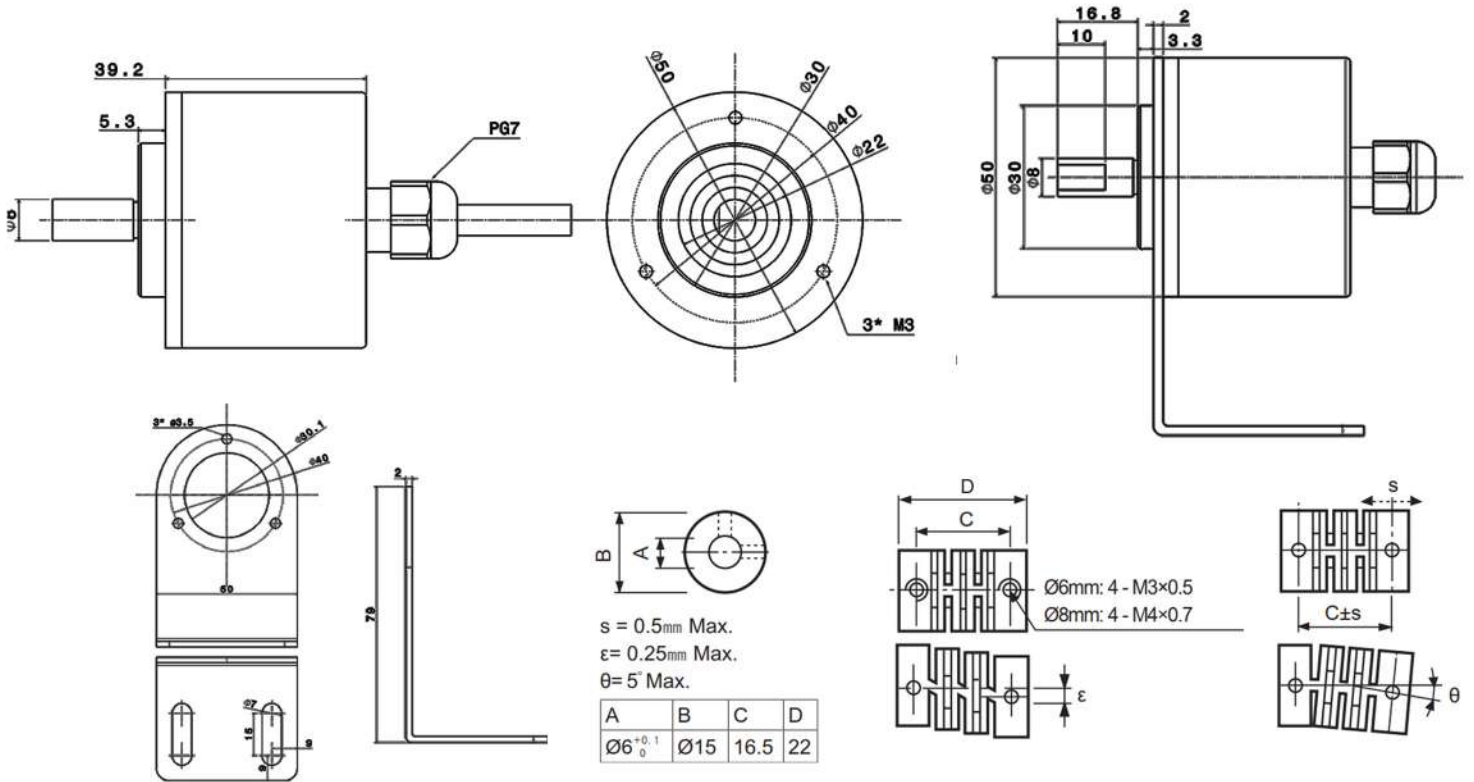


ELECTRICAL CONNECTIONS

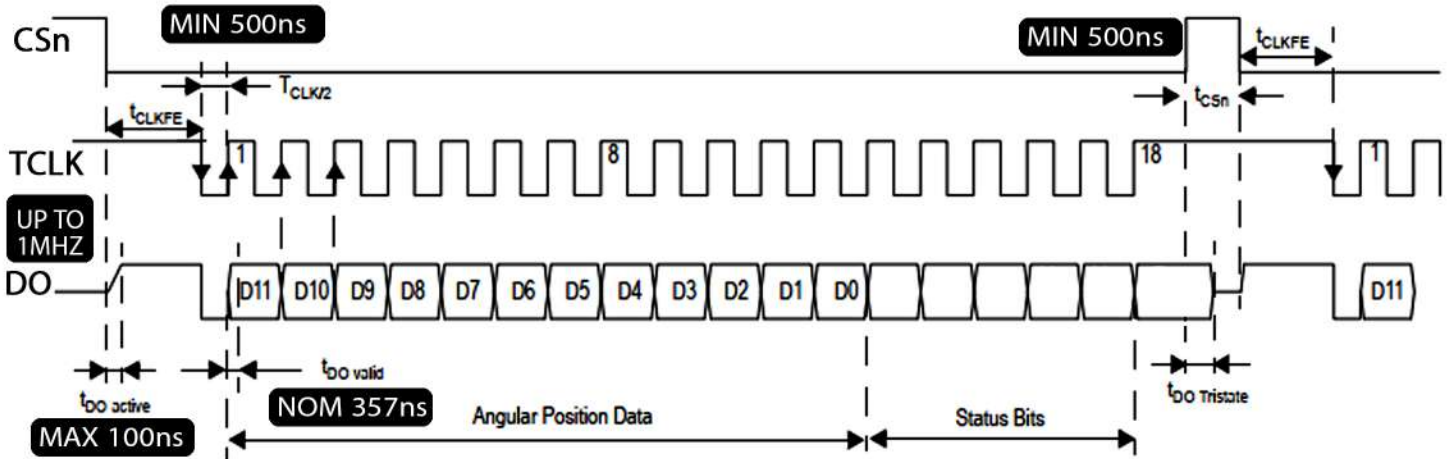
CS:	YE
CLK:	GN
DO:	WH
RD:	V+
BK:	V-
BL:	NC
PK:	SHIELD

ABSOLUTE ROTARY ENCODER

series AS50



IN-OUT SIGNAL



ORDER CODE

AS50-B50-R8-DT-24-4096SSI-L1



INCREMENTAL ROTARY ENCODER

series IN12

- Incremental encoder
- Up to 1024 PPR
- Operating temperature $-40^{\circ}\text{C} \sim +125^{\circ}\text{C}$

MECHANICAL SPECIFICATIONS

Dimensions:	see drawing
Shaft:	Blind hole : ϕ 2, 3, 3.5, 5, 6 mm Direct : ϕ 5, 5.2, 6, 6.5 mm Other sizes according to order
Shaft rotational speed:	up to 3000 rpm
Weight:	~15 gr

ELECTRICAL SPECIFICATIONS

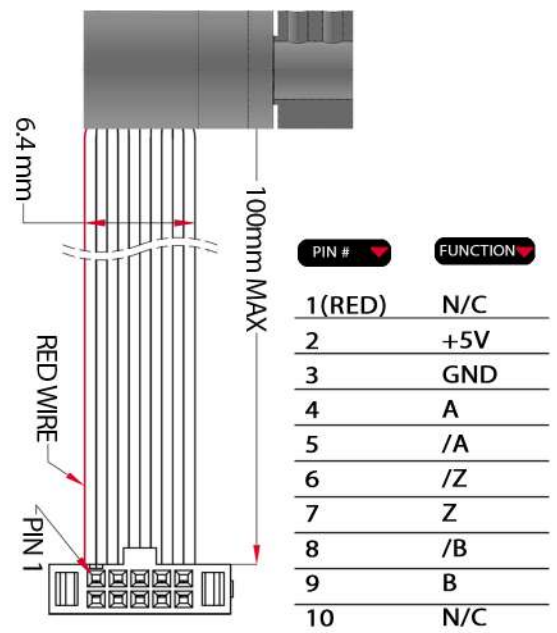
Power supply:	4~5v DC
Output pulse:	A, B, Z (According to coding) A, B, Z, /A, /B, /Z A, B U, V, W
Digital output Resolution:	14 bit (0.08 Deg)
PPR:	25, 50, 100, 200, 256, 300, 400, 500, 512, 1000, 1024
Output frequency:	UP to 300 KHz

MATERIALS

Flange:	stainless steel, non-magnetic
Housing:	stainless steel, non-magnetic
Bearings:	SKF 618/4 Bearing.
Shaft:	stainless steel, non-magnetic

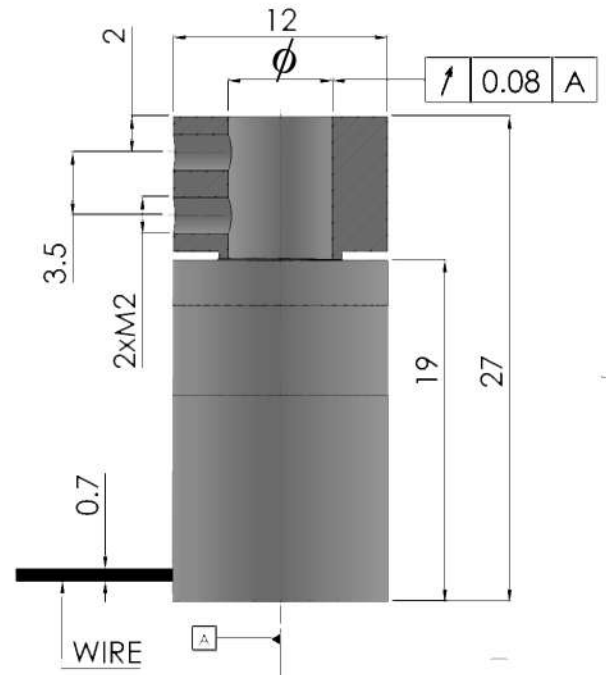
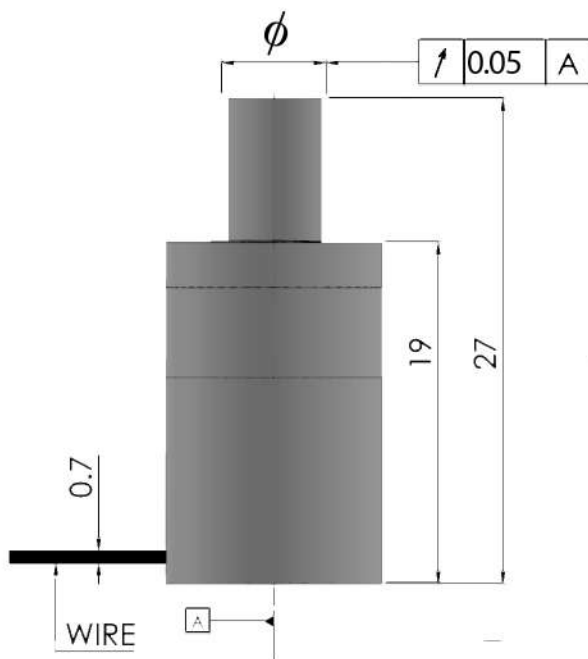


ELECTRICAL CONNECTIONS

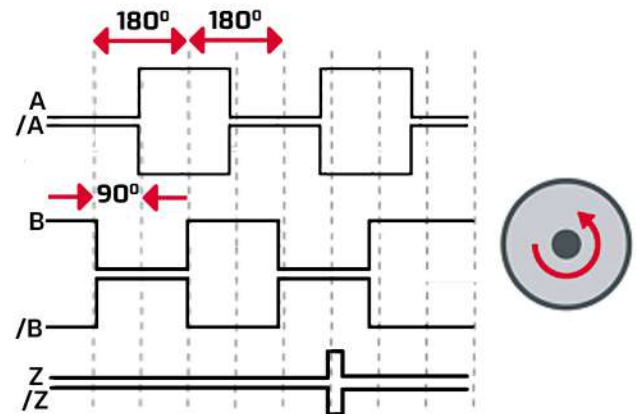
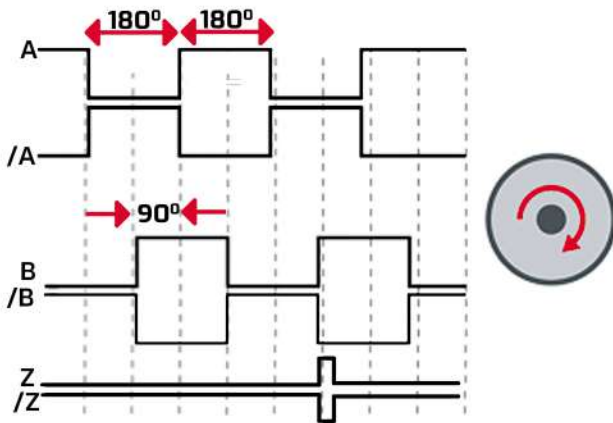


INCREMENTAL ROTARY ENCODER

series **IN12**



IN-OUT SIGNAL



ORDER CODE

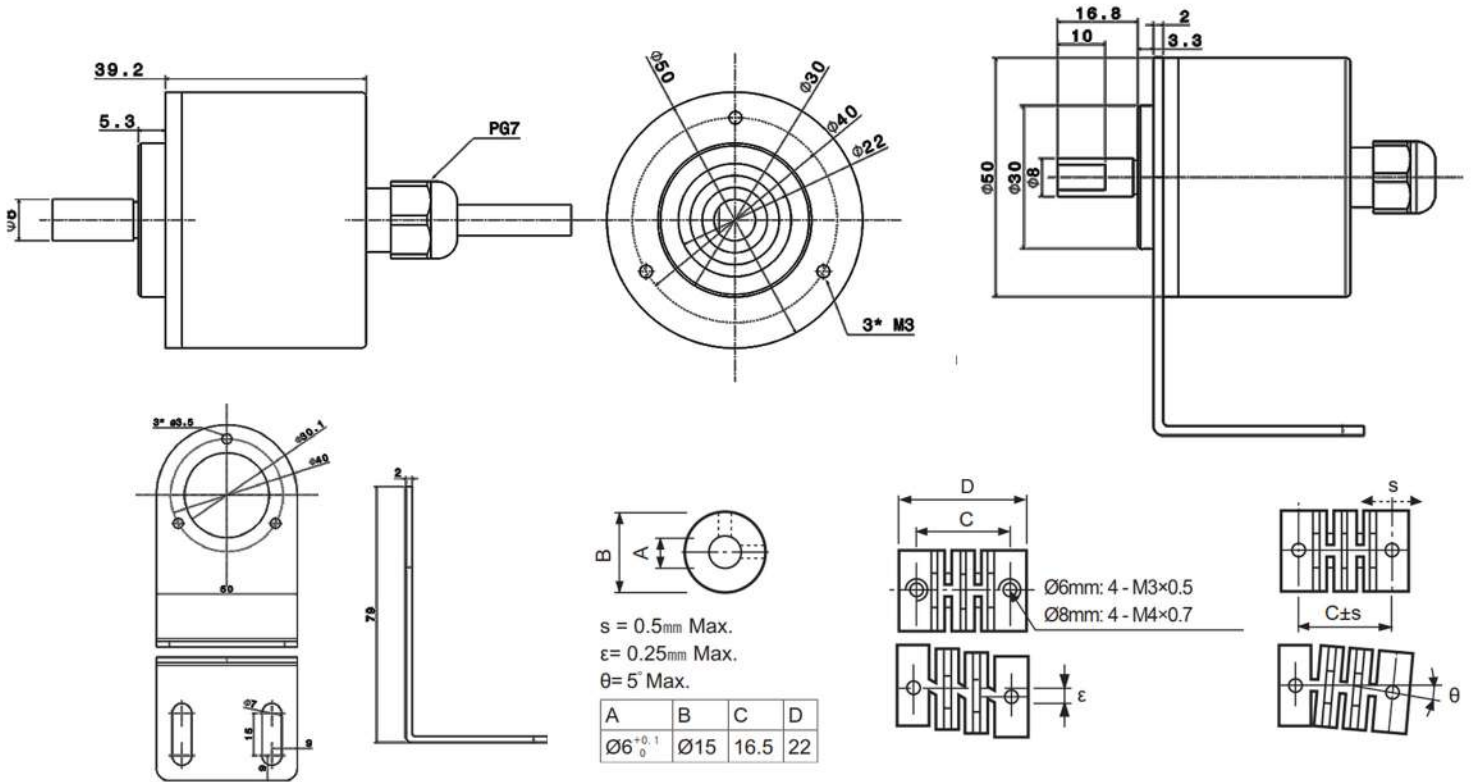
IN12-BX-RX-LD-05-XXXX-X

Housing Diameter (mm)	Housing Diameter (mm)	Shaft Diameter (mm)	Output type	Supply	Pulse per revolution(PPR)	Connector
B: Blind	R: Radial	LD: Line drive	05: 5 V _{cc}	Lx: Cable		
S: Socket weld	H: Blind hollow	TO: Totem pole	24: 5-24 V _{cc}	Dx: DB Connector		
W: Weld neck	T: Trough hollow	PN: PNP	96: 5-36 V _{cc}	Mx: MII Connector		
		NP: NPN	42: 8-42 V _{cc}	Tx: Terminal		

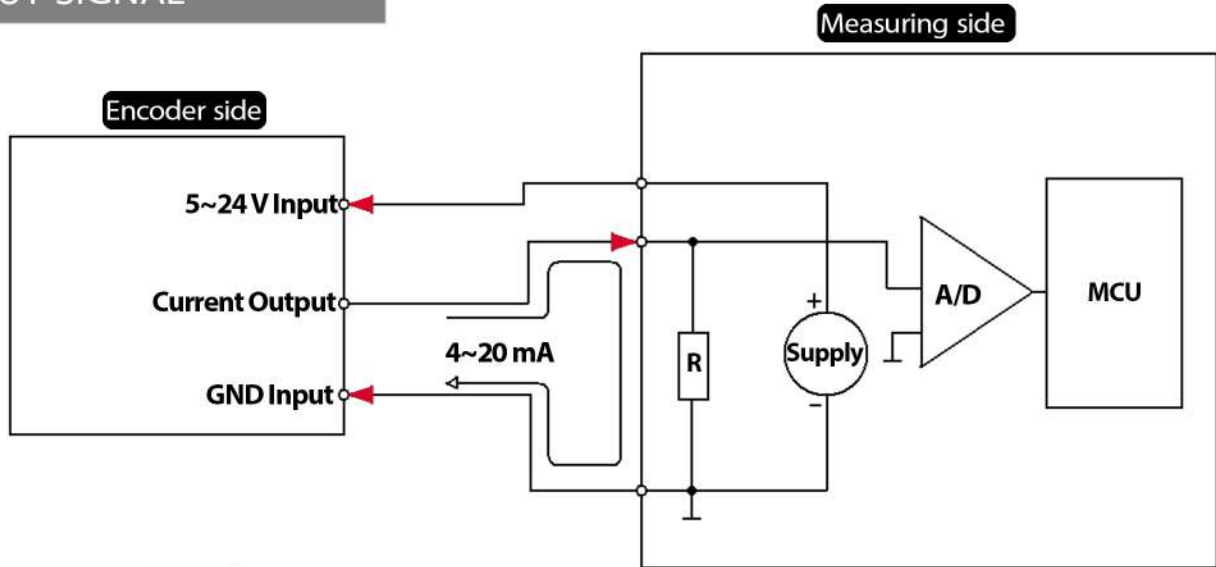


ABSOLUTE ROTARY ENCODER

series AS50



IN-OUT SIGNAL



ORDER CODE

AS50-B50-R8-C3-24-0420-L1





 **Hoshyar Sanat Espadana**
No. 485, 10th St., Isfahan Science & Technology Town (ISTT)

 +98 31 33 93 1 263
+98 31 9 10 11 263

 **Info@yaranics.com**

 **WWW.YARANICS.COM**